



Classic

COLLECTION

# The Daybreak

Model 927



Elevation A - Standard



The Difference Really Hits Home

[ClassicHomes.com](http://ClassicHomes.com)

February 1, 2017

## DAYBREAK SQUARE FOOTAGE\*

Main Level.....	2,144 Sq. Ft.
Basement Level .....	2,150 Sq. Ft.
<b>Total .....</b>	<b>4,294 Sq. Ft.</b>

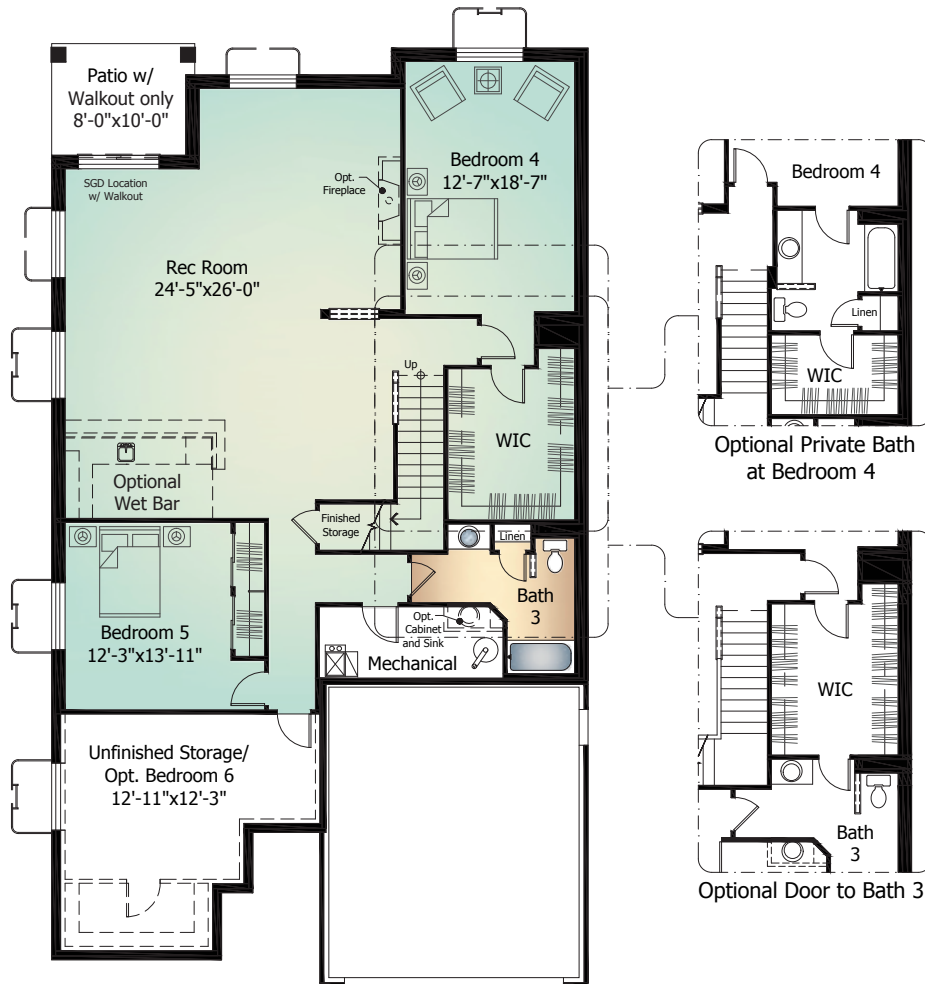
*Actual square footage may vary due to added options, chosen elevations, or amount of basement finish.*





# Basement Level

The Daybreak  
Model 927 - With Optional Finish





*Elevation B - Optional*



*Elevation C - Optional*

February 1, 2017

Artist's conception. All plans, features and specifications are subject to change without notification. Measurements are approximate and may vary. Homes are built to blueprint specifications which must be referenced for specific measurements. This is a marketing document and not part of your home purchase contract.

