



*Classic*  
COLLECTION

MODEL 927

# Daybreak

Main Level..... 2,144 Sq. Ft.  
Basement Level ..... 2,150 Sq. Ft  
**TOTAL\*** ..... **4,294 Sq. Ft.**

\*Actual square footage may vary due to added options, chosen elevations, or amount of basement finish.



*ClassicHomes.com*



Elevation A | *Standard*

NOTES

---

---

---

---

---

---

---

---

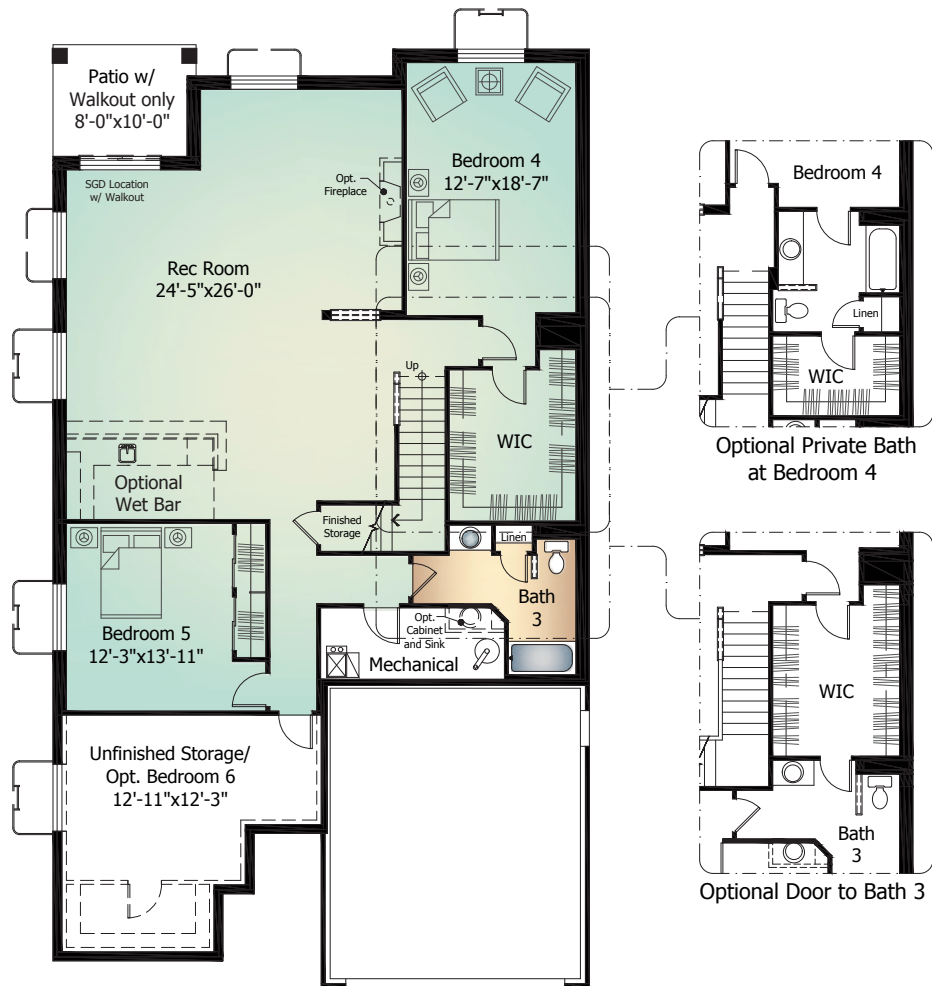
# Main Level

DAYBREAK Model 927



# Basement Level

DAYBREAK Model 927 | with Optional Finish



# Optional Elevations

DAYBREAK Model 927



Elevation B | *Optional*



Elevation C | *Optional*

Artist's conception. All plans, landscaping, features and specifications are subject to change without notification. Measurements are approximate and may vary. Homes are built to blueprint specifications which must be referenced for specific measurements. This is a marketing document and not part of your home purchase contract.



February 1, 2017