

*Classic*  
COLLECTION

MODEL 410

# Ashton

Main Level ..... 2,253 Sq. Ft.  
Basement Level ..... 2,254 Sq. Ft.  
TOTAL \* ..... 4,507 Sq. Ft.

\*Actual square footage may vary due to added options,  
chosen elevations, or amount of basement finish.



*ClassicHomes.com*



Elevation A | *Standard*

NOTES

---

---

---

---

---

---

---

---

# Main Level

ASHTON Model 410

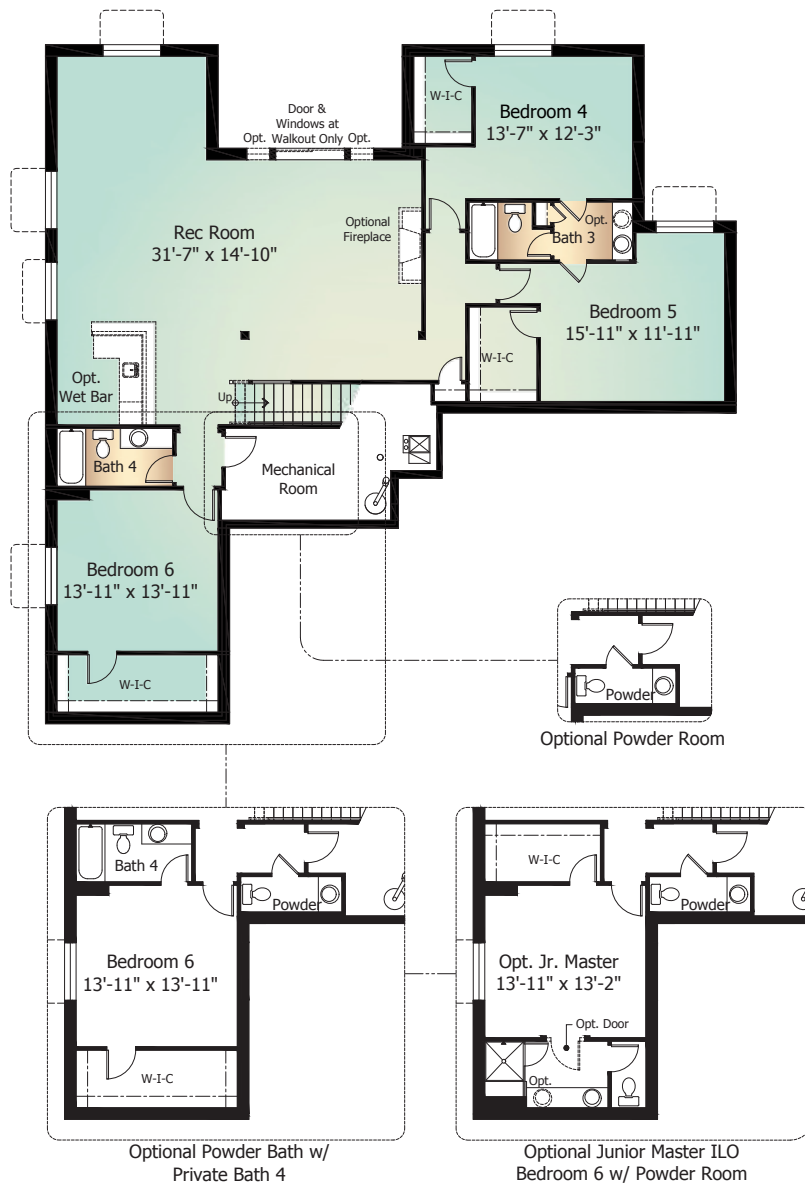
Standard 'A' Elevation shown



# Basement Level

ASHTON Model 410 | with Optional Finish

Standard 'A' Elevation shown



# Optional Elevations

ASHTON Model 410



Elevation B | *Optional*



Elevation C | *Optional*

Artist's conception. All plans, landscaping, features and specifications are subject to change without notification. Measurements are approximate and may vary. Homes are built to blueprint specifications which must be referenced for specific measurements. This is a marketing document and not part of your home purchase contract.



October 25, 2017