



*Classic*

COLLECTION

# The Stratford

*Model 408*



Elevation A - Standard



The Difference Really Hits Home

[ClassicHomes.com](http://ClassicHomes.com)

**November 15, 2017**

## **STRATFORD SQUARE FOOTAGE\***

Main Level.....	2,319 Sq. Ft.
Basement Level .....	2,295 Sq. Ft.
<b>Total .....</b>	<b>4,614 Sq. Ft.</b>

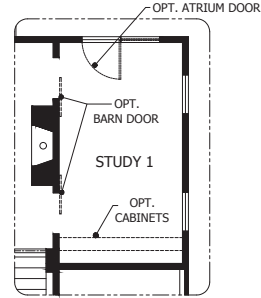
*Actual square footage may vary due to added options, chosen elevations, or amount of basement finish.*



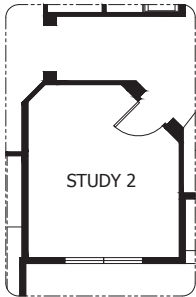
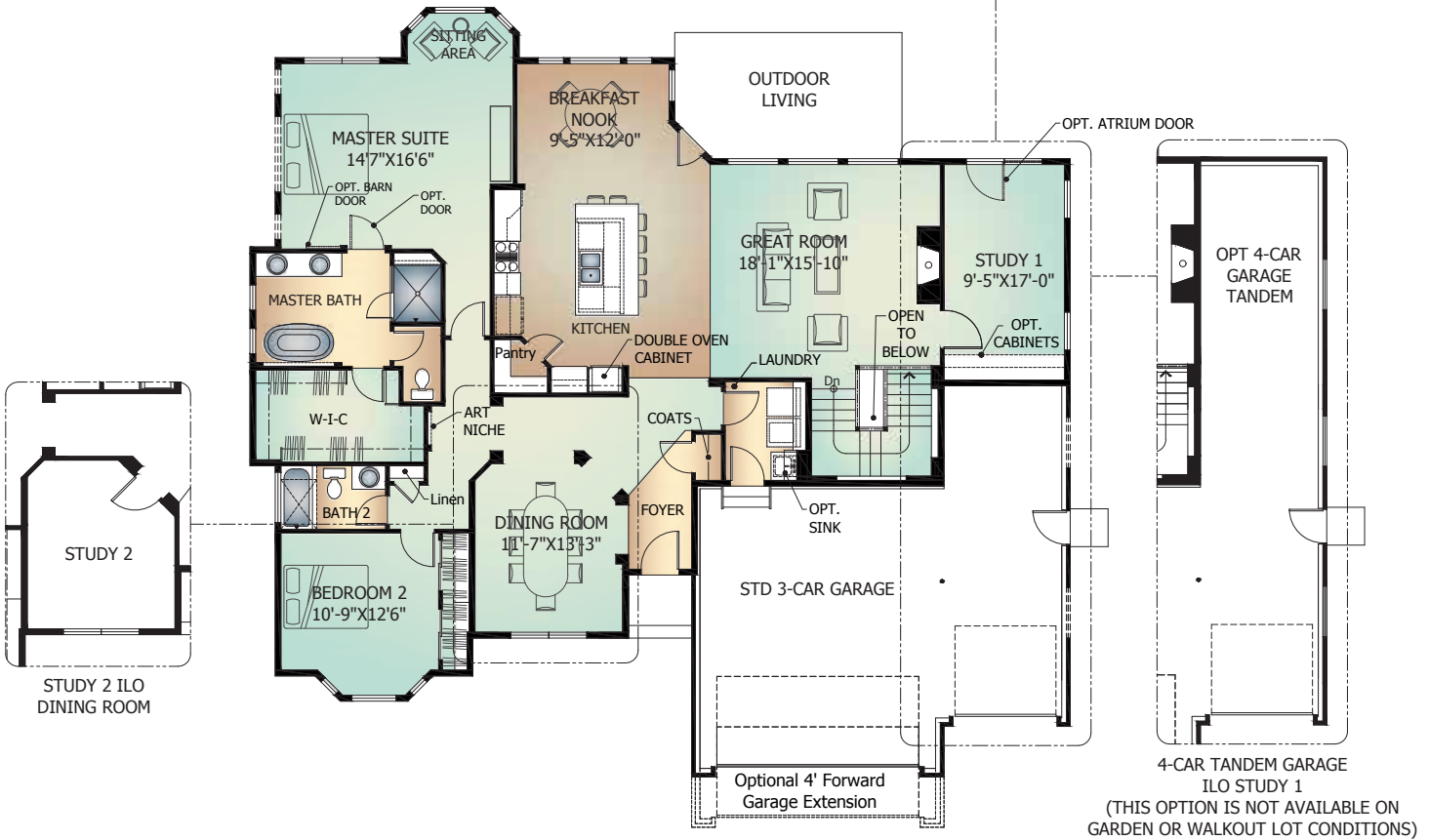
# Main Level

## The Stratford

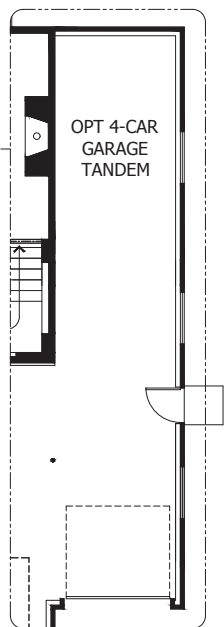
Model 408  
Standard 'A' Elevation Shown



OPTIONAL OPENING INTO STUDY #1



STUDY 2 I/O DINING ROOM

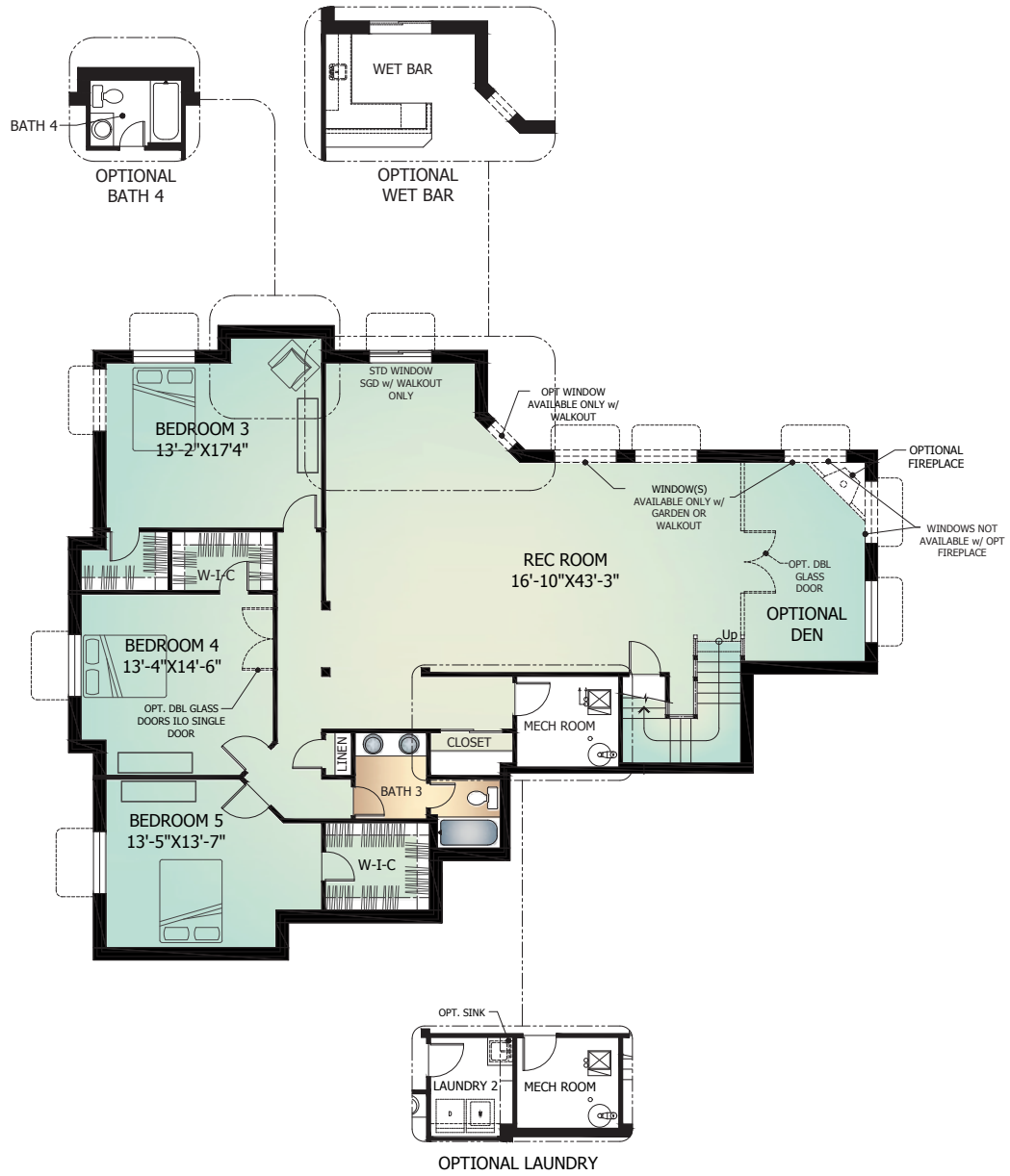


4-CAR TANDEM GARAGE I/O STUDY 1  
(THIS OPTION IS NOT AVAILABLE ON GARDEN OR WALKOUT LOT CONDITIONS)



# Basement Level

The Stratford  
Model 408 - With Optional Finish  
Standard 'A' Elevation Shown





Elevation C - *Optional*

November 15, 2017

Artist's conception. All plans, features and specifications are subject to change without notification. Measurements are approximate and may vary. Homes are built to blueprint specifications which must be referenced for specific measurements. This is a marketing document and not part of your home purchase contract.

