




CLASSICSM
HOMES

*Interior Selections
Guidebook*

YOUR SNEAK PEEK AT WHAT'S TO COME.



What's the best part about building a new home? Many of our customers feel it's the interior selections experience. Why? Because working with a professional Design Coordinator in choosing colors, fixtures and finishes gives you a chance to bring some of your own creativity to the building process.

At Classic Homes, we also understand that getting your house in order can seem overwhelming. Especially when it comes to making decisions about personalizing the look of the interior of your new home. Does hardwood suit your needs more than carpet? Maybe tile is more functional than laminate? What sort of color scheme and light fixtures will best complement your new living room? There are so many exciting decisions to be made!

This selection guidebook is a preview of what to expect as you begin putting the final touches on your new home. It's intended to better prepare you for scheduled appointments with your Design Coordinator. We encourage you to jot down notes along the way as you browse through each section of this booklet. Our intention is to make the best use of the time you spend with us, while offering you the guidance and expertise to make the interior of your home...truly yours.

Doing Your “Homework”

CHEATSHEET FOR PREPARING.

Prior to your first Design Studio appointment, you will have already chosen your structural options with your New Home Specialist, which means you're getting more and more comfortable understanding the layout of your new home.

Now it's time to think about the direction you would like to take your interior selections. The first step is to make yourself familiar with Classic Homes' included features.

Every Classic home is designed to be part of a Collection of homes and each Collection starts out with a great list of included features. Knowing what is already included in your new home will help you determine where you want to focus your Design Studio budget.



www.classichomes.com/classiccollection



www.classichomes.com/renaissancecollection



www.classichomes.com/midtowncollection



www.classichomes.com/townhomecollection



www.classichomes.com/legendscollection

Personalized Selections.

YOUR CHANCE TO SHINE.

The Design Studio is intended to be your one-stop source for all of the interior finishes that go into your new Classic home. Your Design Coordinator will cover everything presented in this Guidebook...and more! While the order in which you make your selections might vary based on your appointment start time – rest assured, your home will not be started until you've signed off on your interior selections. We find that most of our clients accomplish their selections within two appointments.

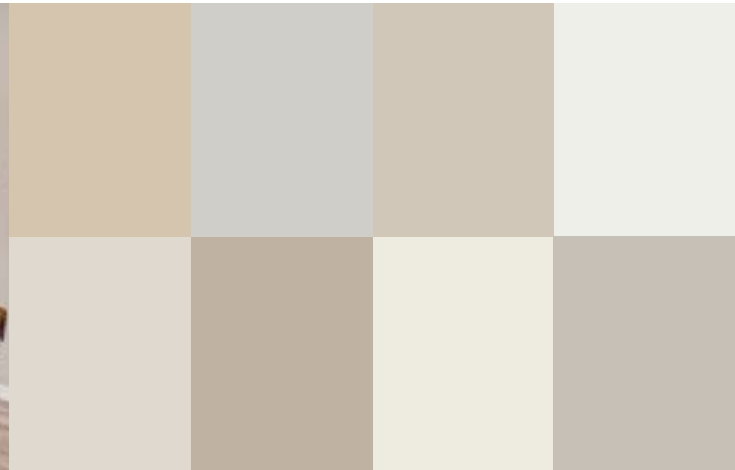
EXPECTATIONS AND COLLABORATION.

Your first appointment is undoubtedly the most important meeting to discuss the interior of your new home. During your first appointment, your Design Coordinator will start by taking some time to learn about your style, preferences and budget guidelines. It is important to note that final pricing for your selections will not be available during your appointment. Because most of the interior finishes are priced on a per square foot or a per piece basis, your Design Coordinator will need time to price out your selections.



Selections. Selections.

**FROM FLOOR TO CEILING,
CLASSIC HOMES HAS YOU COVERED!**



INTERIOR TRIM SELECTIONS

Wall-to-wall selections! Nearly every wall in the Design Studio is painted with one of our available interior paints. Classic Homes has partnered with Sherwin Williams for many years and currently offers eight interior paint color selections. Your choice of color is included in the base price of your home and the option of white painted ceilings is available with any of the available paint selections. No matter what color you select, all walls are pre-primed before painting begins and knock-down texture is included in each home. You also have the opportunity to upgrade to a skip trowel texture with your Design Coordinator.

Interior Paint Selections include:

- Colonnade Gray
- Egret White
- Alabaster
- Extra White
- Balanced Beige
- Accessible Beige
- Kilim Beige
- Big Chill



TRIM & WINDOW SILLS

When it comes to trim, you have options! Your choice of extra white or alabaster white casing and baseboard is included with our house package. Classic Homes also offers the option of selecting a different base and case packages. Your home includes drywall window sills and you have the option to add painted wood window sills.



INTERIOR & EXTERIOR DOORS

All of our homes include a ThermaTru fiberglass entry door and Masonite Cheyenne hollow core painted interior doors. If you have something else in mind, your Design Coordinator will take time to show you our showroom display of door options.



LAUNDRY SELECTIONS

Because keeping things tidy can be serious business, the majority of Classic's homes offer the opportunity to add laundry sinks and/or cabinets. Keep in mind you may also add a new Whirlpool washer and dryer to any of our homes – your only decision will be color and whether you want a top load or front load.

INSULATION

All exterior walls of your new Classic home are insulated. You will also have the option to insulate your floor and interior walls to help mitigate sound.



KITCHEN LAYOUTS & APPLIANCES

Some say the kitchen is the heart of the home. Which is why our team of new home architects and designers have taken the time to design three styles of kitchens that are available with most plans. Your Design Coordinator will show you the key features and attributes for each kitchen layout.



Classic Kitchen Layout:

- Slide In Range
- Over-The-Range Microwave
- Dishwasher

sinks styles, stylish faucets, backsplashes, and more. Keep in mind, some of these selections are included in the price of your home. As an added benefit to our clients, Classic Homes has partnered with the Whirlpool family of appliances, to include KitchenAid and Jenn-Air, to provide an impressive selection of appliances for your new home.

Designer Kitchen Layout:

- Cooktop
- Hood
- Wall Oven / Microwave



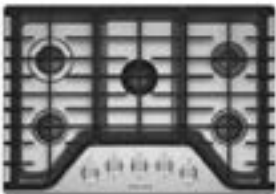
Gourmet Kitchen Layout:

- Cooktop
- Gourmet Hood
- Wall Oven / Microwave
- Upgraded Crown Moulding
- Under Cabinet Light Rail & Trim

Kitchen selections tip:

Knowing whether you prefer the look of stainless steel or black stainless appliances at the time of your first Design Studio appointment will help get your kitchen design on the right track.

Once you select your kitchen layout, you'll have the opportunity to choose from a variety of countertops, cabinets, and finishing details like





CABINETS

Whether your style is traditional, contemporary or transitional – Classic Homes offers a broad range of cabinet styles, finishes and functionality to match your tastes. Our cabinet selections are organized into levels (Base to Level 5) and these levels are determined by species of wood, panel style, and color preference. You also have the option to add crown moulding as you are making your cabinet selections. It's important to keep in mind that the cabinet you select for

your kitchen will be the cabinet showcased throughout your new home.



COUNTERTOPS

GRANITE | QUARTZ | LAMINATE

You'll discover a wide array of countertop materials to complement your cabinet selection. Included in the base price of your home is the opportunity to select granite from our house selections for your kitchen, kitchen island, and master bath.

Secondary bathrooms include laminate countertops and we showcase quite the selection! Plus, you always have the opportunity to explore different levels

of granite and quartz available in the Design Studio. You may select different countertop materials throughout your home, if you feel like mixing it up! Your Design Coordinator will also help you think through the nitty-gritty details like grout color and sealers.



TILE & BACKSPLASH

Our Classic Homes Design Studio showcases a variety of tile and backsplash options to fit nearly any style. You'll find everything from stone and ceramic to glass and mosaics, plus all sorts of new materials arriving frequently. Having a general color palette and style in mind will help you navigate through all of the available selections. As always, your Design Coordinator will begin by showing you the tile and any accents already included in the price of your home.



FLOORING

LAMINATE | HARDWOOD | TILE CARPET & PADDING

Your Design Coordinator will walk you through the available flooring options and will begin by reminding you of the types of flooring already included in your new home. From there, you'll be better prepared to make big decisions about your flooring selections (room by room) while your designer makes notes about how the flooring breaks will occur based on your selections. The flooring areas in our showroom are organized by product type, color, and style – making it easy for your eye to be drawn to the material and color that best suits your style.



PLUMBING, FIXTURES & HARDWARE FINISHES

Everything...including the kitchen sink!

Classic Homes has joined forces with Moen and Kohler, two of the top names in the industry, to offer a powerful selection of bathtubs, faucets, toilets and sinks. All of our homes begin with chrome plumbing fixtures and offer the ability to select brushed nickel, oil-rubbed bronze, matte black, or gold finishes. This is typically the time when your Design Coordinator will want to know if you prefer acrylic or mud set shower pans, whether you're thinking a shower curtain or glass doors, and if you have your heart set on a double vanity. All important questions to ponder prior to your appointment.

Sometimes the smallest details leave a lasting impression. Once you select your finish, your Design Coordinator will present you with several available hardware packages. You also have the opportunity to add other items like soap dispensers, additional hooks, towel bars, and grab bars.



FIREPLACE

If you selected an optional fireplace(s) as one of your structural options with your New Home Specialist, you'll have the chance to personalize it by choosing the finishing touches, such as tile and stone colors, and mantle style and stain at the Design Studio.



LIGHTING, ELECTRICAL AND LOW VOLT SELECTIONS

LIGHTING: Each of our homes includes our house lighting package, which is included in the base price of your home. The Design Studio also showcases other lighting package styles. During your appointment, you'll have the opportunity to see all interior and exterior lighting packages live on display or in printed catalog form.

ELECTRICAL: During the electrical segment of your appointment, your Design Coordinator will help you understand your electrical plan so you can determine if you want to add options such as:

- Additional can lights
- Additional electrical outlets
- Ceiling fans or ceiling fan pre-wires
- USB charging port
- In-floor outlets, dedicated outlets
- Waterproof exterior outlets
- and much more!



LOW VOLT: Classic Homes partners with the low volt experts at HomeRun Electronics to offer cutting edge home theater and audio systems, central vacuum packages, communication and security systems, and any additional electrical wiring you might need in your home. Prior to your first Design Studio appointment a representative from HomeRun Electronics will contact you to schedule your appointment at their showroom to select your low volt wiring options. Your low volt consultant will send your selections to your Classic Homes Design Coordinator so your options become part of your new home color chart.



CROSS CHECKING YOUR PROGRESS.

As you go through your first and second Design Studio appointments, it's a good idea to cross check the list of items below. You should be able to check every item off the list. If toward the end of your second appointment you have unchecked items, it's likely that you might need a third appointment with your Design Coordinator to put on the finishing touches. After you've completed your final appointment and have signed off on your design selection pricing, interior selections color chart will be passed along to your New Home Specialists and Construction teams, who will incorporate them into your new home!

Low-Volt

Drywall Texture

Interior Paint

Interior Trim

Window Sills

Sound Insulation

Interior & Exterior Doors

Kitchen Layout

Appliances

Countertops

Cabinets

Tile & Backsplash

Flooring

Lighting

Electrical

Fireplace(s)

Plumbing

Fixtures

Hardware & Finish

Staircase Pickets

Questions



CLASSIC
HOMESSM

Classic Homes Design Studio
2754 North Gate Blvd.
Colorado Springs, CO 80921
ClassicHomes.com

